



**EUROPEAN
WATERCARE**

Proud UK Manufacturer

WATER TREATMENT SOLUTIONS

PRODUCT CATALOGUE

Quick-change eco-friendly filters

Calcium treatment units

Water softeners

Reverse osmosis systems

Waste water and booster pumps

National & independent service
contracts



European Watercare are a UK Manufacturer at the forefront of water treatment technology.

WELCOME



We are proud of who we are, what we do & why we do it. Our aim is simple; to supply the best value, eco-friendly, water treatment solutions and managed service programmes available on the market today.

Made in Britain, our CTU's (pages 4-11) & iX Water Filters (pages 12-19) offer unbeatable pence per litre capacities and headline our extensive range of water softeners, reverse osmosis units, cartridge filters, service programmes, connections and fittings.

Our products and services WILL deliver operational cost savings and provide peace of mind protection against the harmful effects of water. In addition, our CTU's, iX Filters, cartridge filters & RO's guarantee enhanced water quality for coffee and hot beverages.

We're Green – we are driven by a desire to provide solutions that benefit the environment as well as the water they treat; Our CTU's are 100% recyclable and our iX filter utilises a fully returnable internal media refill. We're also accredited to ISO 14001 Environmental standard, to complete our ISO 9001 and 18001 certification for quality & health & safety.

Steve Slark
Managing Director

WATER TREATMENT FOR PROFESSIONALS

We are the UK's leading independent manufacturer & supplier of water filters, softeners & RO systems.

Established in 1995, European WaterCare is a British manufacturing success story. As well as our head office, located within 30 miles of Central London, we now operate successful affiliate businesses in Ireland, Denmark & South Africa.

Optimistic about the future, our determination as a team to always provide the best customer service is matched only by our strength of brand, quality of products and our goal of providing eco-friendly, value for money solutions.

CONTENTS

	Calcium treatment units For coffee	page 4-7
	Calcium treatment units For cooking	page 8-11
	iX Water Water filters with Insert Refill Technology.	page 12-19
	Partner water treatment units 3M, Everpure & BWT	page 20-27
	Reverse osmosis For coffee and steam ovens	page 28-31
	Water softeners Hot & cold softeners for warewashing	page 32-37
	Booster & Drainflow pumps For boosting water pressure and removing waste water	page 38-39
	Chemical supplies Warewashing, detergents & sanitisers	page 40-41
	Service Installation and ongoing maintenance	page 42-45

Global supply, local support

Available in 116 countries from 4 dedicated regional locations



CTU PRIMA | FOR PERFECT COFFEE

PRIMA Calcium Treatment Units are specially formulated for use with espresso machines and coffee making equipment.

Unbeatable Pence Per Litre Capacities

Our CTU filter provides unbeatable pence per litre capacities across the range in a form factor that has proven over many decades to provide the perfect solution to both protect expensive coffee machinery and enhance and maximise the look and flavour of coffee.

Designed with either VARI-Blend technology or fixed bypass, your CTU Prima can be tailored to provide you with the perfect blend of flavour extraction and protection.

Reduce Single-Use plastic waste

The perfect alternative to single-use plastic water filters, the CTU can be regenerated, recycled and returned to market making it a genuinely green filter providing not only protection for your equipment, but protecting the environment and keeping our oceans and landfill free from plastic.

Due to its large capacities, excellent pricing point and environmentally friendly production, the CTU is the perfect water filter for large, multi-site clients, offering significant operational cost down opportunities married to the peace of mind of managed exchange programmes.



IMPROVED FLAVOUR | MAXIMUM PROTECTION | UNBEATABLE PRICES

The CTU Prima offers unbeatable pence per litre capacities in 5, 10, 18, 23 & 30 Litre options for all your coffee & hot beverage equipment requirements.



REUSABLE
100% RECYCLABLE



FULLY RECYCLABLE &
EXCHANGEABLE FILTER SYSTEM



VARI-BLEND HEAD OR CHOOSE
YOUR FIXED BYPASS • 15% or • 20%



UNBEATABLE PENCE
PER LITRE COSTS



ECO-FRIENDLY ALTERNATIVE TO
SINGLE USE PLASTICS



DESIGNED FOR MAXIMUM FLAVOUR
EXTRACTION FOR PERFECT COFFEE



Ideal for service contracts with multi-save group operators & National Accounts





NATIONAL CONTRACT SERVICING

We can manage water treatment for your multi-site group operation.

Our CTU Prima is the ideal product to protect your estate of coffee shops. We offer a fully managed service, including site surveys to ascertain your exact requirements and will provide a fully tailored proposal.

Our aim with all our managed & monitored contracts is to demonstrate the substantial cost down opportunities available. Our nationwide team of technicians will be on hand to service and exchange filters inline with agreed guidelines to keep your business operating efficiently, whilst saving money.



Proud members of the Beverage Standards Association

European WaterCare are BSA members. The Association is dedicated to raising the quality of beverages produced and the standard of service provided.



CALCIUM TREATMENT UNITS

CTU PRIMA | For perfect coffee •15% Blended head (1.0)

Specially formulated for use with espresso machines and coffee making equipment. 15% of untreated water is returned to the water for improved taste and coffee extraction.



Description	Application	Dimensions (mm)		Capacity (ltrs)	Part No NEW	Part No REGEN
		Height	Diameter			
CTU PRIMA 5	TABLE TOP	390	170	2985	PRIMA-5	CTU5-SPECIAL-R
CTU PRIMA 10	2 GROUP ESPRESSO	485	200	7677	PRIMA-10	CTU10-SPECIAL-R
CTU PRIMA 18	3 GROUP ESPRESSO	545	263	15355	PRIMA-18	CTU18-SPECIAL-R
CTU PRIMA 23	4 GROUP ESPRESSO	648	263	17194	PRIMA-23	CTU23-SPECIAL-R
CTU PRIMA 30	MULTI-MACHINE APPLICATIONS	963	263	29858	PRIMA-30	CTU30-SPECIAL-R

CAPACITY BASED ON WATER HARDNESS OF 12° CLARKE / 180 PPM

CTU PRIMA | For perfect coffee •20% Blended head (1.5)

Specially formulated for use with espresso machines and coffee making equipment. 20% of untreated water is returned to the water for improved taste and coffee extraction.



Description	Application	Dimensions (mm)		Capacity (ltrs)	Part No NEW	Part No REGEN
		Height	Diameter			
CTU PRIMA 5	TABLE TOP	390	170	2995	PRIMA-5	CTU5-2P-R
CTU PRIMA 10	2 GROUP ESPRESSO	485	200	7677	PRIMA-10	CTU10-2P-R
CTU PRIMA 18	3 GROUP ESPRESSO	545	263	15355	PRIMA-18	CTU18-2P-R
CTU PRIMA 23	4 GROUP ESPRESSO	648	263	17194	PRIMA-23	CTU23-2P-R
CTU PRIMA 30	MULTI-MACHINE APPLICATIONS	963	263	29858	PRIMA-30	CTU30-2P-R

CAPACITY BASED ON WATER HARDNESS OF 12° CLARKE / 180 PPM



Installation requirements

Min water pressure: 1.5 BAR
 Max water pressure: 6.0 BAR
 Max water temperature: 35°C (protect from frost)
 Connection: 3/4inch



Water Meter

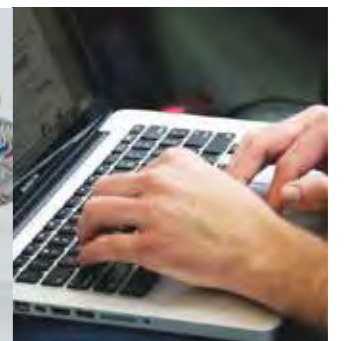
Standard SUPER-DRY Cold water meter. For measuring volume of treated water to ensure correct regeneration intervals.

PART NO. METER-CW-001



Connection Hoses

Stainless Steel food grade braided hoses in a variety of sizes. Please contact us for details of our range.



Register your CTU

This will allow our team to monitor usage & exchange at the correct intervals. Complete peace of mind that your coffee machine or combi oven is protected from limescale to continue to run efficiently.

CTU VAPOUR | OPTIMISED FOR STEAM OVENS

Our new range of VAPOUR Calcium Treatment Units are specially formulated for use with steam ovens and catering equipment using steam.

- Exceptional protection for steam ovens
- Increased capacity
- Own brand options available
- Improved efficiency
- Prolong equipment life

Untreated equipment such as Combi Ovens, Pasta Cookers, Bratt Pans or Boilers will suffer from a build up of lime scale which will attack elements, oven chambers and sensors and will lead to expensive break-downs and unwanted kitchen down-time. Our new VAPOUR calcium treatment units have been specially formulated for use with steam ovens and other kitchen equipment using steam.

Protect your steam oven from the harmful effects of scale and other elements. The Vapour CTU has been specially developed to work in harmony with your steam oven for outstanding results.

Available in 10, 18, 23 & 30 litre capacities.

100% Recyclable 2-way product.
Eliminate plastic waste.



REDUCE COSTS | MINIMISE DOWNTIME | MAXIMISE EFFICIENCIES

CTU Vapour is available in a wide range of sizes from 10 through to 30 Litres - providing protection for any size oven from 10 Grid to 40 Grid and available with Y-Split connections for your stacked, multi-oven configurations.



REUSABLE
100% RECYCLABLE



FULLY RECYCLABLE &
EXCHANGEABLE FILTER SYSTEM



VARI-BLEND HEAD OR CHOOSE
YOUR FIXED BYPASS • 15% or • 20%



UNBEATABLE PENCE
PER LITRE COSTS



ECO-FRIENDLY ALTERNATIVE TO
SINGLE USE PLASTICS



DESIGNED FOR MAXIMUM
PERFORMANCE WITH STEAM OVENS



Ideal for service contracts with
multi-save group operators &
National Accounts





TRUSTED PROTECTION FOR OVER 20 YEARS

Our CTU Vapour has been protecting catering equipment for over 20 years. Available in 2 configurations; standard 2 port, with Inlet & Outlet or with a 3rd port for boiler fed ovens with drain or spray arms for untreated supply that won't affect filter performance.

CTU Vapour provides protection where it matters, using premium, food-grade ion-exchange resin to prevent the build-up of lime scale, keeping oven chambers, steam boilers and level probes clean and efficient.

Available in a wide range of capacities, the Vapour offers unbeatable pence per litre performance. 100% recyclable and available with fully planned, preventative maintenance packages, the CTU Vapour offers complete peace of mind for everyone connected within a busy foodservice operation..



Wras Approved

All our CTU's are WRAS approved, demonstrating full compliance with regulations and bylaws set out by The Water Regulations Advisory Scheme.



CALCIUM TREATMENT UNITS

CTU VAPOUR | Optimised for steam ovens • 20% Blended head (1.5)

Available with 3/4" inlet / outlet connections (2-Port) and with additional spray arm / quench port (3-Port).

Description	Application	Dimensions (mm)		Capacity (ltrs)	2-Port Code		3-Port Code	
		Height	Diameter		New	Regen	New	Regen
CTU VAPOUR 10	6 GRID COMBI OVEN	455	200	7677	VAPOUR-2P-10	CTU102P-R	VAPOUR-3P-10	CTU103P-R
CTU VAPOUR 18	10 GRID COMBI OVEN	545	263	15355	VAPOUR-2P-18	CTU182P-R	VAPOUR-3P-18	CTU183P-R
CTU VAPOUR 23	20 GRID COMBI OVEN	648	263	17914	VAPOUR-2P-23	CTU232P-R	VAPOUR-3P-23	CTU233P-R
CTU VAPOUR 30	STACKED	963	263	29858	VAPOUR-2P-30	CTU302P-R	VAPOUR-3P-30	CTU303P-R

CAPACITY BASED ON WATER HARDNESS OF 12° CLARKE / 180 PPM



CTU VAPOUR | Also available in packs for new installations*

*Packs also available for CTU PRIMA.

Oven Type/Size	Without Spray Arm	With Spray Arm
6 GRID COMBI OVEN	VAPOUR-2P-10-PK	VAPOUR-3P-10-PK
10 GRID COMBI OVEN	VAPOUR-2P-18-PK	VAPOUR-3P-18-PK
20 GRID COMBI OVEN	VAPOUR-2P-23-PK	VAPOUR-3P-23-PK

Contact us with your requirements and our team will tailor a system to suit your requirements.



Installation requirements

Min water pressure: 1.5 BAR
Max water pressure: 6.0 BAR
Max water temperature: 35°C (protect from frost)
Connection: 3/4inch



Water Meter

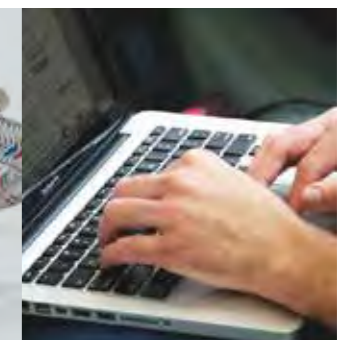
Standard SUPER-DRY Cold water meter. For measuring volume of treated water to ensure correct regeneration intervals.

PART NO. METER-CW-001



Connection Hoses

Stainless Steel food grade braided hoses in a variety of sizes. Please contact us for details of our range.



Register your CTU

This will allow our team to monitor usage & exchange at the correct intervals. Complete peace of mind that your coffee machine or combi oven is protected from limescale to continue to run efficiently.

ECO-FRIENDLY WATER FILTERS

Since launching our iX WATER brand and range of eco-friendly filters in 2015, we have seen the brand grow into a recognised player within the quick change cartridge market within the UK and abroad.

The concept behind iX WATER is simple; provide a simple, easy to identify range of eco-friendly, quick change water filters at cost-effective prices. The iX's unique characteristic is that the internal media insert can be replaced and returned to us - instantly and dramatically cutting down operational costs and reducing wasted plastics.

With specifically engineered variants for coffee, ice, drinking water, vending machines, catering applications and postmix, our iX WATER range has a water filter to suit your exact requirements.

SAVE UP TO 50% ON YOUR WATER FILTER COSTS with our Insert Refill Technology.

The iX range is now bigger and better than ever before and now includes a full suite of smaller iX Konekt filters for specialist applications as well as the 03 – our largest iX WATER filter, providing greater capacity across a range of applications.

Both variants continue to utilise Insert Refill Technology - keeping costs down and saving the planet - one filter exchange at a time.



Save ££££'s every time you change the insert only.

INSERT REFILL TECHNOLOGY

Choose your size

iX Water Filters available in 4 sizes, across a range of variants to suits all your quick-change cartridge filter needs - from Konekt, through 01, 02 and now the NEW 03. iX Water offers a wide range of capacities.



Refill technology allows you to buy the whole filter or the insert refill to save money and help protect the environment.



WHOLE FILTER WITH HEAD FILTER AND INSERT

FILTER AND INSERT FOR QUICK TWIST CHANGE

INSERT ONLY - THE ECONOMICAL & ENVIRONMENTALLY FRIENDLY OPTION

FILTER INSERT IS CHANGED USING THE TOOL PROVIDED

YOU RETURN USED FILTERS FOR RECYCLING IN PRE-PAID PACKAGING

NOW THAT'S CLEVER



ECO-FRIENDLY WATER FILTERS



iX VEND | Water filter for vending machines

5-stage filtration process designed to provide high quality water, improving taste, colour and odour whilst inhibiting scale for high volume hot beverage and vending applications.



Description	Dimensions (mm)		Capacity (ltrs)	Part No
	Height	Diameter		
IX01 VEND COMPLETE SYSTEM INCLUDING HEAD AND BRACKET, ASSEMBLED CARTRIDGE AND RESIN REFILL	350	108	20100	IX01VEND COMPLETE
IX01 VEND COMPLETE ASSEMBLED CARTRIDGE AND RESIN REFILL SYSTEM (WITHOUT HEAD)	275	108	20100	IX01VEND CARTRIDGE
IX01 VEND RESIN REFILL INSERT AND SPANNER	215	75	20100	IX01VEND REFILL

Description	Dimensions (mm)		Capacity (ltrs)	Part No
	Height	Diameter		
IX02 VEND COMPLETE SYSTEM INCLUDING HEAD AND BRACKET, ASSEMBLED CARTRIDGE AND RESIN REFILL	535	108	40200	IX02VEND COMPLETE
IX02 VEND COMPLETE ASSEMBLED CARTRIDGE AND RESIN REFILL SYSTEM (WITHOUT HEAD)	460	108	40200	IX02VEND CARTRIDGE
IX02 VEND RESIN REFILL INSERT AND SPANNER	410	75	40200	IX02VEND REFILL

CAPACITY BASED ON WATER HARDNESS OF 12° CLARKE / 180 PPM

iX ICE | For clear ice and efficient equipment

Make sure your ice cubes are bright and clear and protect your equipment from the potential damage of limescale.



Description	Dimensions (mm)		Capacity (ltrs)	Part No
	Height	Diameter		
IX01 ICE COMPLETE SYSTEM INCLUDING HEAD AND BRACKET, ASSEMBLED CARTRIDGE AND RESIN REFILL	350	108	41005	IX01ICE COMPLETE
IX01 ICE COMPLETE ASSEMBLED CARTRIDGE AND RESIN REFILL SYSTEM (WITHOUT HEAD)	275	108	41005	IX01ICE CARTRIDGE
IX01 ICE RESIN REFILL INSERT AND SPANNER	215	75	41005	IX01ICE REFILL

Description	Dimensions (mm)		Capacity (ltrs)	Part No
	Height	Diameter		
IX02 ICE COMPLETE SYSTEM INCLUDING HEAD AND BRACKET, ASSEMBLED CARTRIDGE AND RESIN REFILL	535	108	92501	IX02ICE COMPLETE
IX02 ICE COMPLETE ASSEMBLED CARTRIDGE AND RESIN REFILL SYSTEM (WITHOUT HEAD)	460	108	92501	IX02ICE CARTRIDGE
IX02 ICE RESIN REFILL INSERT AND SPANNER	410	75	92501	IX02ICE REFILL

CAPACITY BASED ON WATER HARDNESS OF 12° CLARKE / 180 PPM

ECO-FRIENDLY WATER FILTERS



iX FILTER | For great hot beverages

For coffee and hot beverages. Specially formulated media insert to reduce scale AND provide superior taste, aroma and crema for outstanding results.



NEW

Description	Dimensions (mm)		Capacity (ltrs)	Part No
	Height	Diameter		
IX01 FILTER ION EXCHANGE COMPLETE SYSTEM INCLUDING HEAD AND BRACKET, ASSEMBLED CARTRIDGE AND RESIN REFILL	350	108	1300	IX01COMPLETE
IX01 FILTER ION EXCHANGE COMPLETE ASSEMBLED CARTRIDGE AND RESIN REFILL SYSTEM (WITHOUT HEAD)	275	108	1300	IX01CARTRIDGE
IX01 RESIN REFILL INSERT AND SPANNER	215	75	1300	IX01REFILL

Description	Dimensions (mm)		Capacity (ltrs)	Part No
	Height	Diameter		
IX02 FILTER ION EXCHANGE COMPLETE SYSTEM INCLUDING HEAD AND BRACKET, ASSEMBLED CARTRIDGE AND RESIN REFILL	535	108	3000	IX02COMPLETE
IX02 FILTER ION EXCHANGE COMPLETE ASSEMBLED CARTRIDGE AND RESIN REFILL SYSTEM (WITHOUT HEAD)	460	108	3000	IX02CARTRIDGE
IX02 RESIN REFILL INSERT AND SPANNER	410	75	3000	IX02REFILL

Description	Dimensions (mm)		Capacity (ltrs)	Part No
	Height	Diameter		
IX03 FILTER ION EXCHANGE COMPLETE SYSTEM INCLUDING HEAD AND BRACKET, ASSEMBLED CARTRIDGE AND RESIN REFILL	620	220	6800	IX03COMPLETE
IX03 FILTER ION EXCHANGE COMPLETE ASSEMBLED CARTRIDGE AND RESIN REFILL SYSTEM (WITHOUT HEAD)	600	220	6800	IX03CARTRIDGE
IX03 RESIN REFILL INSERT AND SPANNER	580	200	6800	IX03REFILL

CAPACITY BASED ON WATER HARDNESS OF 12° CLARKE / 180 PPM

iX CARBON | Improve taste, colour and odour of drinking water

Specifically designed for taste, colour and odour improvement in areas with low water hardness.



Description	Dimensions (mm)		Capacity (ltrs)	Part No
	Height	Diameter		
IX01 CARBON COMPLETE SYSTEM INCLUDING HEAD AND BRACKET, ASSEMBLED CARTRIDGE AND RESIN REFILL	350	108	22950	IX01CARBON COMPLETE
IX01 CARBON COMPLETE ASSEMBLED CARTRIDGE AND RESIN REFILL SYSTEM (WITHOUT HEAD)	275	108	22950	IX01CARBON CARTRIDGE
IX01 CARBON RESIN REFILL INSERT AND SPANNER	215	75	22950	IX01CARBON REFILL

Description	Dimensions (mm)		Capacity (ltrs)	Part No
	Height	Diameter		
IX02 CARBON COMPLETE SYSTEM INCLUDING HEAD AND BRACKET, ASSEMBLED CARTRIDGE AND RESIN REFILL	535	108	45900	IX02CARBON COMPLETE
IX02 CARBON COMPLETE ASSEMBLED CARTRIDGE AND RESIN REFILL SYSTEM (WITHOUT HEAD)	460	108	45900	IX02CARBON CARTRIDGE
IX02 CARBON RESIN REFILL INSERT AND SPANNER	410	75	45900	IX02CARBON REFILL

CAPACITY BASED ON WATER HARDNESS OF 12° CLARKE / 180 PPM

ECO-FRIENDLY WATER FILTERS



iX03 DISPENSE | For ice machines and post mix systems

The iX DISPENSE 03 has been specifically designed to provide better tasting drinks, whilst keeping costs as low as possible. The iX 03's Insert Refill Technology also provides confidence that your environmental impact is lowered further.



Description	Dimensions (mm)		Capacity (ltrs)	Part No
	Height	Diameter		
IX03 DISPENSE COMPLETE SYSTEM INCLUDING HEAD AND BRACKET, ASSEMBLED CARTRIDGE AND RESIN REFILL	620	220	277593	IX03DISPENSE COMPLETE
IX03 DISPENSE COMPLETE ASSEMBLED CARTRIDGE AND RESIN REFILL SYSTEM (WITHOUT HEAD)	600	220	277593	IX03DISPENSE CARTRIDGE
IX03 DISPENSE RESIN REFILL INSERT AND SPANNER	580	200	277593	IX03DISPENSE REFILL

CAPACITY BASED ON WATER HARDNESS OF 12° CLARKE / 180 PPM

iX03 VAPOUR | For steam ovens

Our new iX VAPOUR 03 has been specially designed for use with steam ovens and other catering equipment that uses steam.



Description	Dimensions (mm)		Capacity (ltrs)	Part No
	Height	Diameter		
IX03 VAPOUR ION EXCHANGE COMPLETE SYSTEM INCLUDING HEAD AND BRACKET, ASSEMBLED CARTRIDGE AND RESIN REFILL	620	220	5757	IX03VAPOUR COMPLETE
IX03 VAPOUR ION EXCHANGE COMPLETE ASSEMBLED CARTRIDGE AND RESIN REFILL SYSTEM (WITHOUT HEAD)	600	220	5757	IX03VAPOUR CARTRIDGE
IX03 VAPOUR RESIN REFILL INSERT AND SPANNER	580	200	5757	IX03VAPOUR REFILL

CAPACITY BASED ON WATER HARDNESS OF 12° CLARKE / 180 PPM

Save £££s

Pence per litre our iX Filter is over 60% more cost effective when you replace the media insert compared to exchanging a traditional one-way water filter. It is therefore not just much kinder to the environment but is also much better value.

60% MORE COST EFFECTIVE



Keep your costs down and save our oceans... one filter exchange at a time.

Reduce single-use plastic waste

Your business takes its environmental responsibilities seriously and we are passionately committed in playing our part to help you achieve your goals.

We know that replacing water filters can be expensive and time consuming and that disposing of expired cartridges can be a necessary, but unwanted, hassle. We are acutely aware of the negative impact that waste plastic has on the environment.

So, we've created a product and program designed to not only reduce your costs significantly, but also recycle 100% of the expired media inserts and return these back into the market place – keeping costs & waste down, whilst creating measurable control.

Our Media Insert Technology allows us to recycle all the plastics returned to us. In addition, we regenerate the resin (media) inside our refills and re-use it in our replacements.

This allows us to keep your costs to a minimum whilst providing an ethical service, sensitive to our planet's delicate eco-system.

When you order a new iX Filter or a replacement Media Insert Refill, you'll receive a free recycling kit consisting of a pre-paid envelope, and a sealable, watertight bag. This makes returning your expired cartridges to us as simple as possible and will no doubt comply with your own environmental policies.

We are passionate about providing cost effective, eco-friendly solutions to water treatment. Our NEW, bigger iX range of water filters, along with our Replace & Return Program provide an easy, responsible and cost effective alternative to current one way systems.

REPLACE Change insert only - not the entire cartridge	RETURN Insert in the reply paid packing provided	RECYCLE Plastic and media is recycled	REDUCE No waste sent to landfill



Helping to reduce single use plastics

iX's unique insert replacement technology is helping to combat the huge damage caused to our oceans caused by single use plastics.

IX KONEKT



Compact filters with specialist media

iX KONEKT offers all the versatility and flexibility of its larger siblings but in a smaller and more compact format where space is a premium. Using Refill Insert technology, iX KONEKT filters still offer benefits to both the environment and your pocket but do so in a range of specialist media that offer targeted solutions to your water borne problems.

iX KONEKT POLYPHOSPHATE | Hot water boilers / small hot beverage machines

Water Filter with Refill Insert Technology. For use with hot water boilers & small hot beverages machines. Food grade Phosphates contained in this filter inhibit build-up of scale by stabilising water. Addition of carbon block helps improve the quality of taste, colour & odour of water. Cold water use only.

NEW



Description	Dimensions (mm)		Capacity (ltrs)	Part No
	Height	Diameter		
IX KONEKT POLYPHOSPHATE COMPLETE SYSTEM INCLUDING HEAD AND BRACKET, ASSEMBLED CARTRIDGE AND RESIN REFILL	295	50	8040	IXKONEKT/PHOSPHATE
IX KONEKT POLYPHOSPHATE COMPLETE ASSEMBLED CARTRIDGE AND RESIN REFILL SYSTEM (WITHOUT HEAD)	260	50	8040	P/PHOSPHATE CARTRIDGE
IX KONEKT POLYPHOSPHATE RESIN REFILL INSERT AND SPANNER	215	50	8040	IXKONEKT/P/PHOSPHATE REFILL

CAPACITY BASED ON WATER HARDNESS OF 12° CLARKE / 180 PPM

iX KONEKT CARBON | Improves taste, colour and odour of drinking water

Water Filter with Refill Insert Technology. For use with drinking water, water coolers & in soft water areas. 1 Micron Carbon Block Filter. Improves taste, colour & odour of drinking water. Carbon Block offers superior surface area to granular carbon whilst minimising pressure drop. Reduces organic impurities and chlorine. Cold water use only.

NEW



Description	Dimensions (mm)		Capacity (ltrs)	Part No
	Height	Diameter		
IX KONEKT CARBON COMPLETE SYSTEM INCLUDING HEAD AND BRACKET, ASSEMBLED CARTRIDGE AND RESIN REFILL	295	50	9180	IXKONEKT/CARBON
IX KONEKT CARBON EXCHANGE COMPLETE ASSEMBLED CARTRIDGE AND RESIN REFILL SYSTEM (WITHOUT HEAD)	260	50	9180	IXKONEKT/CARBON CARTRIDGE
IX KONEKT CARBON RESIN REFILL INSERT AND SPANNER	215	50	9180	IXKONEKT/CARBON REFILL

CAPACITY BASED ON WATER HARDNESS OF 12° CLARKE / 180 PPM

IX KONEKT



iX KONEKT HPC | To remove lead and bacteria

Water Filter with Refill Insert Technology. High spec, high capacity 0.5 Micron Filter Block. Used to remove lead and bacteria such as cysts. Also removes chlorine, herbicides and pesticides for great tasting drinking water. Cold water use only.

NEW



Description	Dimensions (mm)		Capacity (ltrs)	Part No
	Height	Diameter		
IX KONEKT HPC COMPLETE SYSTEM INCLUDING HEAD AND BRACKET, ASSEMBLED CARTRIDGE AND RESIN REFILL	350	108	7436	IXKONEKT/HPCCOMplete
IX KONEKT HPC COMPLETE ASSEMBLED CARTRIDGE AND RESIN REFILL SYSTEM (WITHOUT HEAD)	275	108	7436	IXKONEKT/HPCCARTRIDGE
IX KONEKT HPC RESIN REFILL INSERT AND SPANNER	215	75	7436	IXKONEKT/HPCREFILL

CAPACITY BASED ON WATER HARDNESS OF 12° CLARKE / 180 PPM

iX KONEKT SEDIMENT | To reduce particulates

Water Filter with Refill Insert technology. For use in reducing particulate, organic matter from water. 5 Micron, ceramic sediment filter acts as a superior pre-filter, preparing water for further treatment such as removal of chemicals & heavy metals. *Sediment filter does not improve taste, colour or odour of water.

NEW



Description	Dimensions (mm)		Capacity (ltrs)	Part No
	Height	Diameter		
IX KONEKT SEDIMENT COMPLETE SYSTEM INCLUDING HEAD AND BRACKET, ASSEMBLED CARTRIDGE AND RESIN REFILL	350	108	9624	IXKONEKT/SEDICOMplete
IX KONEKT SEDIMENT COMPLETE ASSEMBLED CARTRIDGE AND RESIN REFILL SYSTEM (WITHOUT HEAD)	275	108	9624	IXKONEKT/SEDICARTRIDGE
IX KONEKT SEDIMENT RESIN REFILL INSERT AND SPANNER	215	75	9624	IXKONEKT/SEDIREFILL

CAPACITY BASED ON WATER HARDNESS OF 12° CLARKE / 180 PPM

DIGI-FLOW WATER METER | For iX

Ensure iX filters are changed at the correct intervals by measuring filtered water output.



Description	Part No
DIGI FLOW WATER METER - 13AMP SUPPLY REQUIRED	METER-CW-DIG-001



PARTNER WATER FILTERS

As the UK's leading manufacturer of water treatment products, we're confident in what we do and what we can offer. However, in order to provide as a complete a service as possible, we're aware that clients sometimes require competitor products. With this in mind, and leaning on the strength and breadth of product range across the filter market, we are delighted announce two new supplier partnerships for 2018 - BWT and 3M, to join our existing partner, Everpure.

We believe these strong brands add to our core portfolio of product lines and by providing ranges from other key manufacturers within the water filter marketplace, we're strengthening our offering to our clients and providing better choice & diversity.



BWT WATER FILTERS



BWT BESTMAX | For Vending, Coffee, Cooking & Ice

Blend heads are set depending on water hardness and requirement.



Description	Dimensions (mm)		Capacity (ltrs) Vending	Capacity (ltrs) Coffee MC + Steam	Capacity (ltrs) Steam Oven/Ice	Part No
	Height	Diameter				
BWT BESTMAX X	300	88	600	445	345	BWT-MAX-X
BWT BESTMAX S	385	88	1000	745	575	BWT-MAX-S
BWT BESTMAX V	445	115	2500	1865	1435	BWT-MAX-V
BWT BESTMAX M	500	130	3800	2835	2180	BWT-MAX-M
BWT BESTMAX L	530	145	5200	3885	2985	BWT-MAX-L
BWT BESTMAX XL	530	145	6800	5080	3905	BWT-MAX-XL
BWT BESTMAX 2XL	600	185	12000	8965	6895	BWT-MAX-2XL

CAPACITY BASED ON WATER HARDNESS OF 12° CLARKE / 180 PPM

BWT BESTMAX PREMIUM | Enhanced water treatment

The modular multi-stage filter uses BWT Magnesium Technology, which also mineralises the filtrate with magnesium. This flavour carrier guarantees high sensory quality water and the products made from it.



Description	Dimensions (mm)		Capacity (ltrs) Vending	Capacity (ltrs) Coffee MC + Steam	Part No
	Height	Diameter			
BWT BESTMAX PREMIUM S	385	88	680	565	BWT-MAXPREMIUM-S
BWT BESTMAX PREMIUM V	445	115	1630	1360	BWT-MAXPREMIUM-V
BWT BESTMAX PREMIUM M	500	130	2450	2040	BWT-MAXPREMIUM-M
BWT BESTMAX PREMIUM XL	530	145	3900	3250	BWT-MAXPREMIUM-XL
BWT BESTMAX PREMIUM 2XL	600	185	6350	5290	BWT-MAXPREMIUM-2XL

CAPACITY BASED ON WATER HARDNESS OF 12° CLARKE / 180 PPM

BWT BESTMAX SOFT | For water with a low limescale content



Description	Dimensions (mm)		Capacity (ltrs) H+C Drink No Steam	Capacity (ltrs) Coffee MC + Steam	Part No
	Height	Diameter			
BWT BESTMAX SOFT X	300	88	600	445	BWT-MAXSOFT-X
BWT BESTMAX SOFT S	385	88	1000	745	BWT-MAXSOFT-S
BWT BESTMAX SOFT V	445	115	2500	1865	BWT-MAXSOFT-V
BWT BESTMAX SOFT M	500	130	3800	2835	BWT-MAXSOFT-M
BWT BESTMAX SOFT L	530	145	5200	3885	BWT-MAXSOFT-L
BWT BESTMAX SOFT XL	530	145	6800	5080	BWT-MAXSOFT-XL
BWT BESTMAX SOFT 2XL	600	185	12000	8965	BWT-MAXSOFT-2XL

CAPACITY BASED ON WATER HARDNESS OF 12° CLARKE / 180 PPM

BWT WATER FILTERS



BESTPROTECT | Complete water treatment & protection

This filter system ensures balanced mineralisation and a consistently high pH value in the filtrate – key factors that minimise the risk of corrosion. Insoluble or difficult-to-remove deposits in machines are now a thing of the past.



Description	Dimensions (mm)		Capacity (ltrs)	Part No
	Height	Diameter		
BWT BESTPROTECT S	385	88	505	BWT-PROTECT-S
BWT BESTPROTECT V	445	115	1250	BWT-PROTECT-V
BWT BESTPROTECT XL	530	145	2620	BWT-PROTECT-XL
BWT BESTPROTECT 2XL	600	185	5000	BWT-PROTECT-2XL

CAPACITY BASED ON WATER HARDNESS OF 12° CLARKE / 180 PPM

BWT BESTTASTE | Clear, particle-free water with active carbon filtration

Best quality water for vending / coffee machines and water dispensers. Particles entering the water during installation, and unwanted tastes and smells, are eliminated, producing maximum flavour in all hot and cold drinks.



Description	Dimensions (mm)		Capacity (ltrs)	Part No
	Height	Diameter		
BWT BESTTASTE	300	65	10000	BWT-TASTE-X
BWT BESTTASTE S	385	65	40000	BWT-TASTE-S

CAPACITY BASED ON WATER HARDNESS OF 12° CLARKE / 180 PPM

BWT CLEAR & BESTMIN | Clear, particle-free water with active carbon filtration

Through its special design, BWT Bestclear ensures that nothing can dry on crockery, glasses or cutlery during the rinsing process. The result is conclusive: spotless place settings, brilliantly shining glasses and sparkling cutlery.



Description	Dimensions (mm)		Capacity (ltrs)	Part No
	Height	Diameter		
BWT BESTCLEAR 2XL	600	185	7500	BWT-CLEAR-2XL

CAPACITY BASED ON WATER HARDNESS OF 12° CLARKE / 180 PPM



Description	Dimensions (mm)		Capacity (ltrs)	Part No
	Height	Diameter		
BWT BESTMIN PREMIUM M	500	130	10,000	BWT-MINPREMIUM-M-

CAPACITY BASED ON WATER HARDNESS OF 12° CLARKE / 180 PPM



BWT BESTFLUSH

For easy flushing of your BWT replacement filter

PART NO. BWT-BESTFLUSH



BWT BESTMAX AQUA METER

A programmable aquameter ensures that you get the maximum capacity out of your water filter and helps you change it when its due.

PART NO. BWT-AQUAMETER

3M WATER FILTERS



3M SCALEGARD BLEND SERIES | Quad stage water treatment

Quadruple-action filtration provides protection against hard scale, corrosion, chlorine, taste, odour and chloramines.



NEW & EXCLUSIVE



NEW & EXCLUSIVE



NEW & EXCLUSIVE



NEW & EXCLUSIVE



Description	Part No
BH3 VARIABLE BYPASS HEAD	3M-BH3HEAD
BH3 VARIABLE BYPASS HEAD WITH MONITOR	3M-BH3MHEAD

Description	Capacity (ltrs)	Part No
3M SCALEGARD BLEND 145 CLS CARTRIDGE FOR COFFEE, HOT BEV & POSTMIX WITH VARIABLE BYPASS	2006	3M-B145CLS

Description	Capacity (ltrs)	Part No
3M SCALEGARD BLEND 165 CLS CARTRIDGE FOR COFFEE, HOT BEV & POSTMIX WITH VARIABLE BYPASS	2835	3M-165CLS

Description	Capacity (ltrs)	Part No
3M SCALEGARD BLEND 195 CLS CARTRIDGE FOR COFFEE, HOT BEV & POSTMIX WITH VARIABLE BYPASS	4727	3M-195CLS

Description	Capacity (ltrs)	Part No
3M SCALEGARD BLEND 1175 CLS CARTRIDGE FOR COFFEE, HOT BEV & POSTMIX WITH VARIABLE BYPASS	7502	3M-1175CLS

CAPACITIES BASED ON WATER HARDNESS OF 12° CLARKE / 180 PPM

3M VH3 HEADS | Standard and gauged heads for 3M filters

For all 3M filters except AP2.



Description	Part No
STANDARD VH3 HEAD WITH FEMALE 3/8 BSP	3M-VH3STANDARDHEAD
VH3 HEAD WITH GAUGE	3M-VH3GAUGEHEAD



3M WATER FILTERS

3M AP2 | Water filter for water boilers and coolers with scale inhibitor

A 1 micron carbon block for chlorine taste and odour reduction with scale inhibitor.



Description	Part No
3M AP2 HEAD FOR AP2 CARTRIDGE	3M-AP2HEAD

Description	Capacity (ltrs)	Part No
3M AP2-C401SG CARTRIDGE FOR DRINKING WATER AND WATER COOLER APPLICATIONS <small>CAPACITY BASED ON WATER HARDNESS OF 12° CLARKE / 180 PPM</small>	4000	3M-AP2-C401SG

3M HF-MS | For coffee machines and small vending machines

Scale inhibition for coffee machines and small vending machines as well as sediment and chlorine, taste and odour reduction.



Description	Capacity (ltrs)	Part No
3M HF05MS CARTRIDGE FOR HOT BEVERAGE EQUIPMENT	5600	3M-HF05MS
3M HF10MS CARTRIDGE FOR HOT BEVERAGE EQUIPMENT <small>CAPACITY BASED ON WATER HARDNESS OF 12° CLARKE / 180 PPM</small>	13000	3M-HF10MS

3M HF-S | For ice cubers and flakers

Reduces sediment, bacteria and chlorine for clearer and great tasting ice, with built in scale inhibitor.



Description	Capacity (ltrs)	Part No
3M HF40-S CARTRIDGE FOR USE WITH ICE MACHINES	94000	3M-HF40-S
3M HF60-S CARTRIDGE FOR USE WITH ICE MACHINES	132489	3M-HF60-S
3M HF90-S CARTRIDGE FOR USE WITH ICE MACHINES <small>CAPACITY BASED ON WATER HARDNESS OF 12° CLARKE / 180 PPM</small>	200000	3M-HF90-S

3M Scalegard Pro | For coffee and hot beverages

Designed to protect coffee and beverage equipment from the harmful effects of scale build-up in hard water areas.



Description	Capacity (ltrs)	Part No
3M SCALEGARD PRO 124 CARTRIDGE FOR COFFEE AND HOT BEVERAGES	1600	3M-SGP124BN
3M SCALEGARD PRO 165 CARTRIDGE FOR COFFEE AND HOT BEVERAGES	2300	3M-SGP165BN
3M SCALEGARD PRO 195 CARTRIDGE FOR COFFEE AND HOT BEVERAGES <small>CAPACITY BASED ON WATER HARDNESS OF 12° CLARKE / 180 PPM</small>	3900	3M-SGP195BN

EVERPURE WATER FILTERS

EVERPURE

EVERPURE | Insurice filters for ice machines

The Everpure Insurice system delivers premium quality water for Ice applications, such as cubers and flakers.



Description	Dimensions (mm)		Capacity (ltrs)	Part No
	Height	Width/Depth		
EVERPURE INSURICE SINGLE FILTER FOR ICE MACHINE APPLICATIONS FOR ICE MACHINES USING UP TO 135KG DAILY. <small>CAPACITY BASED ON WATER HARDNESS OF 12° CLARKE / 180 PPM</small>	677	200/130	34000	EV932401

Description	Dimensions (mm)		Capacity (ltrs)	Part No
	Height	Width/Depth		
EVERPURE INSURICE TWIN FILTER FOR ICE MACHINE APPLICATIONS FOR ICE MACHINES USING UP TO 280KG DAILY. <small>CAPACITY BASED ON WATER HARDNESS OF 12° CLARKE / 180 PPM</small>	640	420/139	68130	EV932402

Description	Part No
EVERPURE QL3BI HEAD FOR INSURICE FILTERS	EV94313-14

EVERPURE | Water filters

Professional water treatment cartridge filters.



Description	Part No
EVERPURE QL3B HEAD	EV94312-13



Description	Dimensions (mm)		Capacity (ltrs)	Part No
	Height	Diameter		
EVERPURE MH2 REPLACEMENT CARTRIDGE FILTER FOR HOT BEVERAGE APPLICATIONS, UTILISING QL3B HEAD (NOT SUPPLIED)	369	83	34068	EV961255



Description	Dimensions (mm)		Capacity (ltrs)	Part No
	Height	Diameter		
EVERPURE MC2 REPLACEMENT CARTRIDGE FILTER FOR DRINKING WATER APPLICATIONS, UTILISING QL3B HEAD (NOT SUPPLIED)	527	83	34068	EV961326



Description	Dimensions (mm)		Capacity (ltrs)	Part No
	Height	Diameter		
EVERPURE 4C REPLACEMENT CARTRIDGE FOR COLD BEVERAGE VENDING EQUIPMENT	369	83	22710	EV96011

Description	Dimensions (mm)		Capacity (ltrs)	Part No
	Height	Diameter		
EVERPURE 4H REPLACEMENT CARTRIDGE FOR HOT BEVERAGE VENDING EQUIPMENT <small>CAPACITY BASED ON WATER HARDNESS OF 12° CLARKE / 180 PPM</small>	369	83	11356	EV961100

CLARIS WATER FILTERS



EVERPURE CLARIS | Professional water treatment systems

Delivering premium water for a variety of applications.



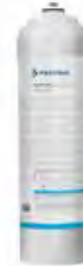
Description	Part No
CLARIS HEAD ONLY	EVP4339-91



Description	Dimensions (mm)		Capacity (ltrs)	Part No
	Height	Diameter		
CLARIS MEDIUM COMPLETE FILTER ADJUSTABLE, ION-SELECTIVE FILTER .	476	94	34068	EVP4339-01
CLARIS MEDIUM REPLACEMENT CARTRIDGE <small>CAPACITY BASED ON WATER HARDNESS OF 12° CLARKE / 180 PPM</small>	426	94	34068	EVP4339-11



Description	Dimensions (mm)		Capacity (ltrs)	Part No
	Height	Diameter		
CLARIS LARGE COMPLETE FILTER ADJUSTABLE, ION-SELECTIVE FILTER .	410	136	5016	EVP4339-02
CLARIS LARGE REPLACEMENT CARTRIDGE <small>CAPACITY BASED ON WATER HARDNESS OF 12° CLARKE / 180 PPM</small>	360	136	5016	EVP4339-12



Description	Dimensions (mm)		Capacity (ltrs)	Part No
	Height	Diameter		
CLARIS EXTRA LARGE COMPLETE FILTER ADJUSTABLE, ION-SELECTIVE FILTER .	521	136	7192	EVP4339-03
CLARIS MEDIUM REPLACEMENT CARTRIDGE <small>CAPACITY BASED ON WATER HARDNESS OF 12° CLARKE / 180 PPM</small>	471	136	7192	EVP4339-13



Description	Dimensions (mm)		Capacity (ltrs)	Part No
	Height	Diameter		
CLARIS XXL COMPLETE FILTER ADJUSTABLE, ION-SELECTIVE FILTER .	521	175	13200	EVP4339-04
CLARIS XXL REPLACEMENT CARTRIDGE <small>CAPACITY BASED ON WATER HARDNESS OF 12° CLARKE / 180 PPM</small>	471	175	13200	EVP4339-14



Description	Part No
CLARIS WATER METER TO MONITOR THE USAGE RATE OF A CLARIS SYSTEM, AND DETERMINE REPLACEMENT INTERVAL.	EVP4339-30



Description	Part No
BOOSTER PUMP FOR CLARIS FILTERS	EVPSHURFLOPUMP

CLARIS ULTRA WATER FILTERS



EVERPURE CLARIS ULTRA | Ultra protection and taste for coffee

Balanced alkalinity and mineral composition in water, with stable and close-to-neutral pH which helps prevent limescale formation.



Description	Dimensions (mm)		Capacity (ltrs)	Part No
	Height	Diameter		
CLARIS ULTRA 250 REPLACEMENT CARTRIDGE <small>CAPACITY BASED ON WATER HARDNESS OF 12° CLARKE / 180 PPM</small>	315	94	2250	EVP4339-80



Description	Dimensions (mm)		Capacity (ltrs)	Part No
	Height	Diameter		
CLARIS ULTRA 500 REPLACEMENT CARTRIDGE <small>CAPACITY BASED ON WATER HARDNESS OF 12° CLARKE / 180 PPM</small>	426	94	3750	EVP4339-81



Description	Dimensions (mm)		Capacity (ltrs)	Part No
	Height	Diameter		
CLARIS ULTRA 1000 REPLACEMENT CARTRIDGE <small>CAPACITY BASED ON WATER HARDNESS OF 12° CLARKE / 180 PPM</small>	360	136	7000	EVP4339-82



Description	Dimensions (mm)		Capacity (ltrs)	Part No
	Height	Diameter		
CLARIS ULTRA 1500 REPLACEMENT CARTRIDGE <small>CAPACITY BASED ON WATER HARDNESS OF 12° CLARKE / 180 PPM</small>	471	136	10000	EVP4339-83



Description	Dimensions (mm)		Capacity (ltrs)	Part No
	Height	Diameter		
CLARIS ULTRA 2000 REPLACEMENT CARTRIDGE <small>CAPACITY BASED ON WATER HARDNESS OF 12° CLARKE / 180 PPM</small>	471	175	16500	EVP4339-84



REVERSE OSMOSIS SYSTEMS

For exceptional water treatment results, reverse osmosis is the ultimate water treatment method for both steam production and coffee. RO will typically remove 97% of all dissolved solids and materials from the water including hardness minerals and chlorides. For steam production, this is the only method that will remove chlorides, which, if left untreated, will corrode the stainless steel used in ovens. For coffee, removing most of the dissolved solids from the water, allows baristas to start with a blank sheet of paper and 'dial' back in the required level of minerals to achieve unique results. This method, coupled with the right choice of beans, roast, equipment and talent, can produce unforgettable, world class results.

Despite popular misconception, Reverse Osmosis Units are extremely cost-effective over an operational life-cycle for both caterers and baristas alike, providing reliable and consistent results when faced with variable or aggressive water quality.

European WaterCare supplies, installs and maintains Reverse Osmosis water treatment solutions to meet all foodservice requirements which include specialist solutions for coffee and combination/steam ovens.



ECOSOFT REVERSE OSMOSIS FOR COFFEE

Exceptional coffee the RO purifies water, and enriches it with minerals, essential for coffee taste and aroma.

High Capacity consistent treated water supply with tankless operation.

Delicious water due to DOW Filmtec™ membrane element and high-quality activated carbon filters.

Dynamic SmartLight® with illumination that displays the filter operation mode and filter capacity status.

Compact design neatly houses filters and hoses in an attractive unit.

*only available on Robust 1500

EVERPURE **3M**

ULTIMATE MULTI-STAGE WATER TREATMENT

RO FOR CATERING



ECOSOFT ROBUST 1000 | Reverse Osmosis for exceptional water

Multi-stage filtration system for exceptional water quality and protection.



Description	Flow capacity Litres Per Hr	Water consumption Litres Per Hr	Dimensions (mm)	Part No
			Height/Width/Depth	
ECOSOFT 1000 COMPLETE	55-60	110 - 120	420/425/220	ROBUSTEN

Filters and replacement components

Description	Membranes	Part No
ECOSOFT 1000 RO FILTER (ECO)	3 X CP2012-100 (ECO)	ROBUSTECO
ECOSOFT 1000 RO FILTER (DOW)	3 X TW1812-100 (DOW)	ROBUSTEN
ECOSOFT SET OF IMPROVED REPLACEMENT FILTERS 1-2-3 FOR REVERSE OSMOSIS FILTERS		CHVECOEXP
DOW TW30-1812-100 GPD MEMBRANE ELEMENT		TW1812-100
ECOSOFT CP-1812-100 MEMBRANE ELEMENT		CP2012-100

ECOSOFT ROBUST 1500 | Reverse Osmosis for exceptional water

Multi-stage filtration system for exceptional water quality and protection.



Description	Flow capacity Litres Per Hr	Water consumption Litres Per Hr	Dimensions (mm)	Part No
			Height/Width/Depth	
ECOSOFT 1500 ROBUST COMPLETE	75-80	150 - 160	420/425/265	ROBUST1500

Filters and replacement components

Description	Membranes	Part No
ECOSOFT ROBUST 1500 REVERSE OSMOSIS FILTER	1 X TW3012-500 (DOW)	ROBUST1500EN
ECOSOFT SET OF REPLACEMENT FILTERS 1-2-3 FOR REVERSE OSMOSIS FILTERS*	1 X TW3012-500 (DOW)	CHV3ECOEXP
DOW TW30-3012-500 GPD MEMBRANE ELEMENT		TW3012-500

ECOSOFT ROBUST 3000 | Reverse Osmosis for exceptional water

Multi-stage filtration system for exceptional water quality and protection.



Description	Flow capacity Litres Per Hr	Water consumption Litres Per Hr	Dimensions (mm)	Part No
			Height/Width/Depth	
ECOSOFT ROBUST 3000 COMPLETE	145-150	290 - 300	445/480/380	ROBUST3000

Filters and replacement components

Description	Membranes	Part No
ECOSOFT ROBUST 3000 RO FILTER	2 X TW3012-500 (DOW)	ROBUST3000EN
ECOSOFT GRANULAR ACTIVATED CARBON REPLACEMENT FILTER 4.5" X 10"		CHV4520ECOEXP
DOW TW30-3012-500 GDP MEMBRANE ELEMENT		TW3012-500

RO FOR COFFEE



ECOSOFT ROBUST PRO | Reverse Osmosis for exceptional water

Multi-stage filtration system for exceptional water quality with minerals added back to water for improved taste.



Description	Flow capacity Litres Per Hr	Water consumption Litres Per Hr	Dimensions (mm)	Part No
			Height/Width/Depth	
ECOSOFT ROBUST PRO COMPLETE	55-60	110 - 120	420/425/265	ROBUSTPRO

Filters and replacement components

Description	Membranes	Part No
ECOSOFT ROBUST PRO RO FILTER CREAM COLOUR	1 X TW3012-500 (DOW)	ROBUSTPROW
ECOSOFT ROBUST PRO RO FILTER BROWN COLOUR	1 X TW3012-500 (DOW)	ROBUSTPROB
ECOSOFT SET OF REPLACEMENT FILTERS 1-2-3 FOR ROBUST PRO REVERSE OSMOSIS FILTERS		CHVROBUSTPRO
DOW TW30-3012-500 GDP MEMBRANE ELEMENT		TW3012-500

EVERPURE RO UNITS | Water conserving RO systems

EVERPURE

RO systems for potable (Coffee applications) and non potable (Steam ovens) water.



Description	Dimensions (mm)	Daily (ltrs) Throughput	Part No
	Height/Width/Depth		
EVERPURE 75S RO UNIT FOR STEAM OVENS. 4FC5 PRE-FILTER, 4CC CALCITE FEEDER, ONBOARD STORAGE AND BLEND VALVE	475/432/264	192 plus blend %	CONSERVE75S

MEMBRANE RECOVERY 51% NSF VERIFIED



Description	Dimensions (mm)	Daily (ltrs) Throughput	Part No
	Height/Width/Depth		
EVERPURE 75E RO UNIT FOR COFFEE/ICE. 4FC5 PRE-FILTER, 4CC CALCITE FEEDER, 4CB5 POST CARBON FILTER, ONBOARD STORAGE AND BLEND VALVE	475/432/264	192 plus blend %	CONSERVE75E

3M SGLP2-BL RO SYSTEM | Dual RO system for steamers & coffee



Dual Port Reverse Osmosis System provides two water qualities for specialty coffee and flash steam applications.



Description	Part No
3M SGLP2-BL RO SYSTEM DUAL RO SYSTEM FOR FLASH STEAMERS AND ESPRESSO MACHINES	3M-SGLP2-BL-RO

Filters and replacement components

Description	Part No
3M 100 GPD RO MEMBRANE	3M-100-RM
3M HF20 CYST POST FILTER CARTRIDGE	3M-HF20CPF
3M HF37 PRE FILTER	3M-HF37-PF

HOT & COLD WATER SOFTENERS

Glasswashing and dishwashing is all about the finished article – crystal clear, clean, sparkling crockery, plates and glasses.

A major factor in clean results is the quality of water used in the rinse. However, the properties of water can differ greatly from region to region and the different impurities contained within this water will affect the results of any clean cycle. Ensure the best warewashing results with our range of Autosoft manual and automatic softeners. Autosoft salt-based water softeners are available in a wide range of capacities and formats to suit all types of applications. Timed, metered and combo valves for maximum flexibility.

The ideal water treatment solution for commercial glasswashers and dishwashers. Our specialist softeners produce soft water that help produce sparkling clean crockery, cutlery and glassware. Equipment is also protected from the harmful effects of chlorine and scale. Cold and hot water versions available.



The Autosoft range of hot & cold water softeners provide softened water for warewashing and laundry giving better washing results and protecting equipment from harmful scale and other minerals.



Scale reduction softened water improves washing results and protects equipment from scale.

Energy & detergent efficiency by reducing scale build up - heating elements are more efficient. Less detergent is needed and washing results are improved.

Timer or Metered controlled

TIMER CONTROL VALVE - Ion-Exchange Resin is flushed with brine solution to re-charge at a set time. Ideal for busy sites with fixed operating times.

METERED CONTROL VALVE - Ion-Exchange Resin is flushed with brine solution to re-charge after a pre-determined measured volume of water is used. Perfect for saving money on low-usage equipment or irregular operating times.



**LOW COST SOFTENER
SALT DELIVERY SERVICE
CALL 01279 780 250**
see page 41



COLD WATER SOFTENERS



AUTOSOFT COLD WATER SOFTENERS | Metered

Automatic metered - For dishwasher or glasswasher, EWC valve, mounted in moulded cabinet.



Description	Dimensions (mm)			Capacity (Ltrs)	Part No
	Height	Width	Depth		
COLD WATER SOFTENER - 10 LITRE	680	280	450	1494	E10M
COLD WATER SOFTENER - 14 LITRE	720	280	450	2278	E14M
COLD WATER SOFTENER - 18 LITRE	735	280	450	2929	E18M
COLD WATER SOFTENER - 23 LITRE	800	280	450	3743	E23M
COLD WATER SOFTENER - 30 LITRE	1127	316	559	4882	E30M

CAPACITY BASED ON WATER HARDNESS OF 20° CLARKE

AUTOSOFT COLD WATER SOFTENERS | Logix Metered

Automatic metered - For dishwasher or glasswasher, Autotrol Logix 255/760 valve, mounted in moulded cabinet.



Description	Dimensions (mm)			Capacity (Ltrs)	Part No
	Height	Width	Depth		
COLD WATER SOFTENER - 10 LITRE	625	280	450	1494	AT10M
COLD WATER SOFTENER - 14 LITRE	665	280	450	2278	AT14M
COLD WATER SOFTENER - 18 LITRE	665	280	450	2929	AT18M
COLD WATER SOFTENER - 23 LITRE	780	280	450	3743	AT23M
COLD WATER SOFTENER - 30 LITRE	1127	316	559	4882	AT30M

CAPACITY BASED ON WATER HARDNESS OF 20° CLARKE

AUTOSOFT COLD WATER SOFTENERS | Installation Specification

Softener connection information.

Cold water softeners installation requirements

WATER PRESSURE	MINIMUM 1.5 BAR* MAXIMUM 6.0**
WATER CONNECTION	¾" BSP INLET AND OUTLET. ADEQUATE DRAINAGE AND OVERFLOW FACILITIES REQUIRED
WATER TEMPERATURE	MAXIMUM 35°C. PROTECT FROM FREEZING
ELECTRICAL SUPPLY	24/240V VAC 3 AMPS – MUST BE ON A MAINTAINED SUPPLY, I.E. NEVER SWITCH OFF

*NOTE IF PRESSURE IS LESS THAN 1.5 BAR EUROPEAN WATERCARE RECOMMENDS THE INSTALLATION OF A PUMPED SOFTENER.

**NOTE IF PRESSURE EXCEEDS 3 BAR A PRESSURE REDUCING VALVE MUST BE FITTED TO KEEP WARRANTY VALID



COLD WATER SOFTENERS



AUTOSOFT COLD WATER SOFTENERS | Timer controlled

Automatic cold feed - For dishwasher or glasswasher, EWC valve, mounted in moulded cabinet.



Description	Dimensions (mm)			Capacity (Ltrs)	Part No
	Height	Width	Depth		
MINI WATER SOFTENER - 5 LITRE	580	205	390	664	E5T - MICRO
MINI WATER SOFTENER - 5 LITRE	580	280	450	664	E5T
WATER SOFTENER - 10 LITRE	680	280	450	1494	E10T
WATER SOFTENER - 14 LITRE	720	280	450	2278	E14T
WATER SOFTENER - 18 LITRE	735	280	450	2929	E18T
WATER SOFTENER - 23 LITRE	800	280	450	3743	E23T
WATER SOFTENER - 30 LITRE	1127	316	559	4882	E30T

CAPACITY BASED ON WATER HARDNESS OF 20° CLARKE

AUTOSOFT COLD WATER SOFTENERS | Logix Timer controlled

Automatic cold feed - For dishwasher or glasswasher, Autotrol Logix 255/740 valve, mounted in moulded cabinet.



Description	Dimensions (mm)			Capacity (Ltrs)	Part No
	Height	Width	Depth		
MINI WATER SOFTENER - 5 LITRE	525	205	390	664	AT5 - MICRO
MINI WATER SOFTENER - 5 LITRE	525	280	450	664	AT5
WATER SOFTENER - 10 LITRE	625	280	250	1494	AT10
WATER SOFTENER - 14 LITRE	665	280	450	2278	AT14
WATER SOFTENER - 18 LITRE	665	280	450	2929	AT18
WATER SOFTENER - 23 LITRE	780	280	450	3743	AT23
WATER SOFTENER - 30 LITRE	1127	316	559	4882	AT30

CAPACITY BASED ON WATER HARDNESS OF 20° CLARKE

MANUAL FILL WATER SOFTENERS

No electrical supply required - simply fitted In-line from mains cold water spur (No control valve).



Description	Dimensions (mm)		Capacity (ltrs) Between Regen Cycles	Part No
	Height	Diameter		
8 LITRE MANUAL WATER SOFTENER	400	190	900	WS8
12 LITRE MANUAL WATER SOFTENER	500	190	1350	WS12
16 LITRE MANUAL WATER SOFTENER	600	190	1800	WS16
20 LITRE MANUAL WATER SOFTENER	900	190	2600	WS20

CAPACITY BASED ON WATER HARDNESS OF 20° CLARKE

COLD WATER SOFTENERS



AUTOSOFT HOT WATER SOFTENERS | Up to 60°C

Automatic hot feed up to 60° C - For dishwasher or glasswasher, EWC valve, mounted in moulded cabinet.



Description	Dimensions (mm)			Capacity (Ltrs)	Part No
	Height	Width	Depth		
HOT WATER SOFTENER - 5 LITRE	580	205	390	664	HW5
HOT WATER SOFTENER - 10 LITRE	680	280	450	1494	HW10
HOT WATER SOFTENER - 14 LITRE	680	280	450	2278	HW14
HOT WATER SOFTENER - 18 LITRE	780	280	450	2929	HW18
HOT WATER SOFTENER - 23 LITRE	800	280	450	3743	HW23
HOT WATER SOFTENER - 30 LITRE	1135	361	559	4882	HW30

CAPACITY BASED ON WATER HARDNESS OF 20° CLARKE

AUTOSOFT HOT WATER SOFTENERS - Installation Specifications

Automatic hot feed up to 60° C - For dishwasher or glasswasher, EWC valve, mounted in moulded cabinet.

Hot water softeners installation requirements

WATER PRESSURE	MINIMUM 1.5 BAR MAXIMUM 6.0*
WATER CONNECTION	¾ TO 1" DEPENDANT ON UNIT SIZE. ADEQUATE DRAINAGE AND OVERFLOW FACILITIES REQUIRED
WATER TEMPERATURE	MAXIMUM 60°C. PROTECT FROM FREEZING
ELECTRICAL SUPPLY	24/240V VAC 3 AMPS – MUST BE ON A MAINTAINED SUPPLY, DO NOT SWITCH OFF
**NOTE IF PRESSURE EXCEEDS 3 BAR A PRESSURE REDUCING VALVE MUST BE FITTED TO KEEP WARRANTY VALID	

AUTOSOFT PRO PUMPED SOFTENER | Cold pressurised soft water

Automatic, cold feed - For dishwasher or glasswasher, with integral electronically controlled pump for low water pressure/flow applications.



Description	Dimensions (mm)			Capacity (Ltrs)	Part No
	Height	Width	Depth		
COLD FEED WATER SOFTENER - 10 LITRE	725	390	520	1494	CW10PS
COLD FEED WATER SOFTENER - 14 LITRE	725	390	520	2278	CW14PS
COLD FEED WATER SOFTENER - 18 LITRE	725	390	520	2929	CW18PS

CAPACITY BASED ON WATER HARDNESS OF 20° CLARKE

AUTOSOFT PRO PUMPED SOFTENER | Hot pressurised soft water

Automatic, hot feed - For dishwasher or glasswasher, with integral electronically controlled pump for low water pressure/flow applications.



Description	Dimensions (mm)			Capacity (Ltrs)	Part No
	Height	Width	Depth		
HOT FEED WATER SOFTENER - 10 LITRE	725	390	520	1494	HW10PS
HOT FEED WATER SOFTENER - 14 LITRE	725	390	520	2278	HW14PS
HOT FEED WATER SOFTENER - 18 LITRE	725	390	520	2929	HW18PS

CAPACITY BASED ON WATER HARDNESS OF 20° CLARKE

AUTOSOFT PRO SOFTENERS



AUTOSOFT PRO PUMPED SOFTENER | with BREAK TANK COLD

Automatic, cold feed - For dishwasher or glasswasher where soft water and Class 'A' air gap is required.



Description	Dimensions (mm)			Capacity (Ltrs)	Part No
	Height	Width	Depth		
WATER SOFTENER WITH BREAK TANK - 10 LITRE	725	390	520	1494	BTS-CW-10
WATER SOFTENER WITH BREAK TANK- 14 LITRE	725	390	520	2278	BTS-CW-14
WATER SOFTENER WITH BREAK TANK- 18 LITRE	725	390	520	2929	BTS-CW-18

CAPACITY BASED ON WATER HARDNESS OF 20° CLARKE

AUTOSOFT PRO PUMPED SOFTENER | with BREAK TANK HOT

Automatic, hot feed - For dishwasher or glasswasher where soft water and Class 'A' air gap is required.



Description	Dimensions (mm)			Capacity (Ltrs)	Part No
	Height	Width	Depth		
WATER SOFTENER WITH BREAK TANK - 10 LITRE	725	390	520	1494	BTS-HW-10
WATER SOFTENER WITH BREAK TANK- 14 LITRE	725	390	520	2278	BTS-HW-14

CAPACITY BASED ON WATER HARDNESS OF 20° CLARKE

AUTOSOFT PRO PUMPED DUAL TEMP SOFTENER | Simultaneous Hot & Cold

Simultaneous soft water for hot & cold feeds.



Description	Dimensions (mm)			Capacity (Ltrs)	Part No
	Height	Width	Depth		
DUAL FEED HOT & COLD AUTOMATIC SOFTENER WITH PUMP IN CABINET	725	390	520	2278	HC1014

CAPACITY BASED ON WATER HARDNESS OF 20° CLARKE

BREKATANK PRO

PUMPED BREAKTANK | With CLASS 'A' air gap

Pumped break tank to prevent back flow contamination of water supply.



Description	Dimensions (mm)			Part No
	Height	Width	Depth	
BREAK TANK, 18 LITRES	340	275	480	BT18
BREAK TANK AND PUMP SET, 30 LITRES	690	410	590	BTP30

DRAINFLOW & BOOSTER PUMPS

Our Drain Flow Pumps are designed to collect and pump away waste water up to a 3 metre head, at a temperature of up to 96 degrees centigrade, from a level as low as 40mm from the floor. The unit has gone on to become an almost essential part of a commercial kitchen set-up where floor gulley drainage is absent or where ovens are sited away from drainage points. It is the only solution specifically designed for pumping waste water from island based combination ovens.

In addition European WaterCare is able to offer Booster Pump sets where water pressure needs boosting on site, to maintain correct water pressure levels for continued operation of effected appliances.

Our compact and fully automatic pump systems are mounted in robust rotationally moulded cabinets and will pump water at temperatures up to 60 degrees Celsius to a maximum pressure of 4 Bar.



Low cost solution

WaterCare's Drainflow pumps avoid the need for expensive sub floor drainage systems and have been specifically designed to pump away low level waste water.

PUMPS



DRAINFLOW PUMPS | Wastewater management

Collects and pumps waste water from combi ovens at temperatures up to 100°C to a 3 metre head.



Description	Dimensions (mm)			Capacity (ltrs)		Part No
	Height	Width	Depth	Input (lpm)	Output (lpm)	
STANDARD DRAIN PUMP 75MM FOR 6 & 10 GRID COMBI OVENS PUMPS AS LOW AS 75MM FROM FLOOR	570	220	355	6	11	DPSP01-75MM*
LARGE DRAIN PUMP 40MM FOR 20 GRID COMBI OVENS PUMPS AS LOW AS 40MM FROM FLOOR	680	280	450	6	11	DPSP02-40MM*

BOOSTER PUMPS | Water pressure management

To increase water pressure to ensure adequate supply to filtration equipment.



Description	Dimensions (mm)			Part No
	Height	Width	Depth	
BOOSTER PUMP AND IDROMAT, BOOST MAINS HOT/COLD WATER (NO CABINET)	340	275	480	IP01



Description	Dimensions (mm)			Part No
	Height	Width	Depth	
MINI BOOSTER PUMP SET, BOOST MAINS HOT/COLD WATER	340	205	390	IP13









Description	Dimensions (mm)			Part No
	Height	Width	Depth	
BOOSTER PUMP SET, BOOST MAINS HOT/COLD WATER	490	275	450	IP18

CHEMICALS

ESPRESSO MACHINE CLEANING CHEMICALS | Specially formulated sanitisers

Essential cleaning and sanitising chemicals for professional espresso machines.

	Description	Pack	Part No
	CLEAN EXPRESS AUTOMATIC CLEANING TABLETS FOR MACHINES WITH AUTOMATIC CLEANING CYCLES	100	CHEM-AD-008
	Description	Pack	Part No
	CLEAN EXPRESS GROUP HEAD CLEANING POWDER REMOVES OILS AND RESIDUE FROM GROUP HEADS	900G	CHEM-AD-009
	Description	Pack	Part No
	CLEAN EXPRESS MILK FROTHER CLEANER CLEANS MILK DEPOSITS FROM MILK TUBES	1 LTR	CHEM-AD-010
	Description	Pack	Part No
	CLEAN BOILER DESCALING POWDER PROFESSIONAL DESCALING POWDER FOR BOILERS	1KG	CHEM-AD-011
	Description	Pack	Part No
	CLEAN EXPRESS DESCALING TABLETS (1 GRAM) USE FOR CLEANING SMALL BEAN 2 CUP COFFEE MACHINES	100	CHEM-AD-012
	Description	Pack	Part No
	CLEAN EXPRESS LIQUID GROUP HEAD CLEANER REMOVES OILS AND RESIDUE FROM GROUP HEADS	1 LTR	CHEM-AD-013

CHEMICALS




WAREWASHING & SANITISING CHEMICALS | Professional standard results

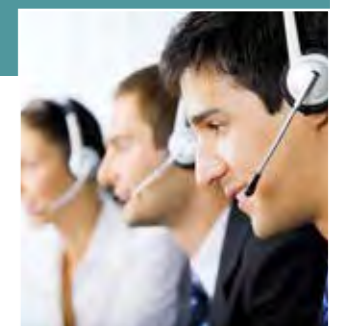
High performance range of cleaning chemicals designed for demanding commercial kitchen and catering environments.

	Description	Pack	Part No
	CHEMCARE DISHWASHING DETERGENT . DISHWASHERS AND GENERAL WAREWASHING. FOR PLATES, CROCKERY, CUTLERY AND UTENSILS	5 LTRS	CHEM-AD-002
	CHEMCARE GLASSWASHING DETERGENT GLASS WASHERS, FOR GLASSWARE, GLASSES AND TUMBLERS	5 LTRS	CHEM-AD-003
	Description	Pack	Part No
	CHEMCARE DISHWASHING RINSE AID . DISHWASHERS AND GENERAL WAREWASHING. FOR PLATES, CROCKERY, CUTLERY AND UTENSILS	5 LTRS	CHEM-AD-004
	CHEMCARE GLASSWASHING RINSE AID GLASS WASHERS, FOR GLASSWARE, GLASSES AND TUMBLERS	5 LTRS	CHEM-AD-005
	Description	Pack	Part No
	STAINLESS STEEL CLEANER SPECIALLY FORMULATED, FOOD SAFE STAINLESS STEEL CLEANER FOR USE ON ALL STAINLESS STEEL SURFACES	5 LTRS	CHEM-AD-007

SOFTENER SALT | Delivered to your door

	HYDROSOFT SALT TABLETS FOR SOFTENERS HIGH PURITY SALT FOR SOFTENING WATER	25 KG	SALT-25KG
	HYDROSOFT SALT TABLETS - EASY HANDLE BAG HIGH PURITY SALT FOR SOFTENING WATER IN EASY TO HANDLE SIZE	10 KG	SALT-10KG
	HYDROSOFT SALT TABLETS - EASY HANDLE BAGS HIGH PURITY SALT FOR SOFTENING WATER IN EASY TO HANDLE SIZE	3 X 10 KG	SALT-X3-10KG


**LOW COST SALT
DELIVERY SERVICE
CALL 01279 780 250**



SERVICE | MANAGED EXCHANGE SOLUTIONS

How can our service team help your business?
By providing nationwide service & support, we offer ongoing protection and scale-free guarantees to eliminate problems caused by water on catering, coffee & hot beverage equipment, which in turn will lower your costs and assist in a continued, uninterrupted service.

Our fully managed & monitored water treatment programmes are designed to maintain equipment at its most efficient through scheduled servicing and exchange of water treatment equipment. Our PPM Programmes are arranged by our in-house team of account handlers specifically to reduce operational costs, maximise efficiencies and minimise downtime.

We employ a large team of nationwide on-call, quick response technicians to provide the perfect service for large group operators and smaller independent customers, alike. Our clients range across foodservice & hospitality sectors and include hotels, restaurants, coffee shops, retail, schools, hospitals & local authorities.

Our expertise & knowledge, backed by ISO 9001, 14001 & 18001 accreditations, prove our quality, sustainability and commitment to customer service. Cost effective & competitive, our products & service provide a eco-friendly alternative to single use plastics and offer substantial operational cost savings.



REDUCE YOUR COSTS

Peace-of-mind

First Class Service, Back-Up and After-Sales Care.



CO-ORDINATED
MANAGED
EXCHANGE SERVICE



SIGNIFICANT OPERATIONAL COST
DOWN OPPORTUNITY

NATIONAL TEAM OF EXPERIENCED, CHECKED
ON-CALL, QUICK RESPONSE TECHNICIANS

NATIONWIDE
COVERAGE

EXPERIENCED IN MULTI-SITE ASSET
MANAGEMENT PORTALS

FULLY MANAGED PROGRAMMES PLANNED BY OUR
PROFESSIONAL ACCOUNT HANDLERS



Water analysis test
available upon request



OUR TECHNICIANS EXCHANGED OVER 20,000 WATER FILTERS, NATIONWIDE, IN THE LAST 12 MONTHS.

SERVICES OFFERED

- **Full managed & monitored PPM** for your group, estate or building – please contact our sales team to discuss your requirements
- **Planned preventative programmes** offered for all products
- **Exchange programmes** - CTU, iX, partner filters
- **Service programmes** - Softeners, Reverse Osmosis, Drainflow Pumps
- **Site survey** - EWC Technician visit + water test, pressure test, survey or equipment on site with breakdown, recommended solution/ products based on findings
- **Installation** - New CTU Prima or Vapour. EWC technician visit + to connect NEW CTU to existing equipment
- **Exchange an existing or expiring CTU** - EWC technician visit + EXCHANGE CTU to exchange and swap-out spent unit
- **Installation or exchange of iX Filter** - EWC technician visit + complete iX Filter system or replacement cartridge or Insert refill
- **Installation or exchange of partner filters** - EWC technician visit + NEW or EXCHANGE Partner filter
- **Connection of AUTOSOFT automatic water softener** - EWC technician + AUTOSOFT water softener – connection to existing equipment
- **Annual/planned softener service** - EWC technician visit + changing cages, seals or valve flaps (dependent on model) + health check & clean
- **Reactive call-outs** - EWC technician visit to site to attend and fix problem – outside of contract terms for following equipment; CTU, softeners, reverse osmosis, iX, partner filters, drainflow pumps, booster pumps
- **Drainflow service & deep clean** - EWC technician visit + Service + Deep clean for smooth, continued operation

Site Surveys

We offer a full site survey service. This provides a comprehensive breakdown and cost analysis of all water treatment requirements for site or estate. Working closely with our clients project and sales teams, we aim to provide solutions that are not only cost effective, but meet the individual space requirements, energy needs and environmental credentials.

Training

Our senior technicians are on hand to provide on-site training. Alternatively, we hold regular workshops for client engineer teams at our head office in Harlow, Essex – covering installation, set-up, commissioning, fault finding & correct product sourcing and quoting.

Scale Free Guarantee

We are so confident in our ability to correctly specify, install and maintain our clients water treatment that when you take out one of our planned preventative maintenance programmes, we offer our Scale Free Guarantee – keeping your equipment free of scale and other water borne issues. T & C's apply.

Regular Replacements for Total Peace of Mind

Experienced caterers value quality & efficiency highly. Regularly, timed and scheduled replacements of water filters guard against the harmful effects of water and will ensure equipment stays efficient and effective. Depending on the quality of water on site and the volume used, we can calculate when your filter will need replacing and carry out the exchange at the correctly required intervals to maintain a seamless supply of water, offering unbroken protection.

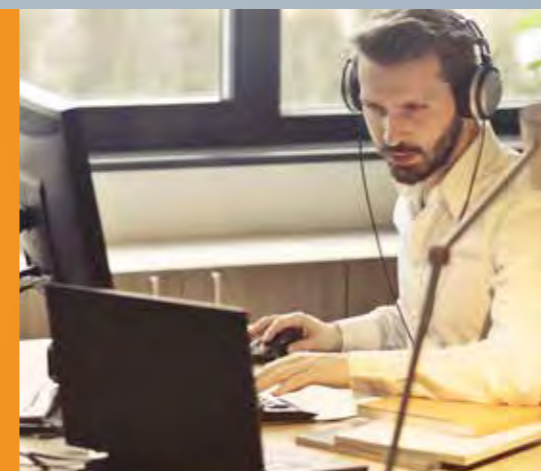


TotalCare

Programmes for Reverse Osmosis for total peace of mind and financial budgeting

Range of fully inclusive, managed and supported contracts to include; Selection of contract length (1 or 2 Years)

Fixed Price, scheduled, multiple EWC technician visits per year, replacement of filters & membranes, health check, water/pressure tests.



Water Testing



Ask us for a water testing kit to check the quality of water on your site or in your kitchen, return in the free-post envelope and we will provide you with an analysis reporting the make-up of water and our recommendations for treatment and protection.

Our tests will provide you with detail on; total hardness (PPM), temporary hardness (PPM), pH level, iron, silica, chloride content (mg/l).

WE'RE HERE TO HELP

If you have any questions, would like to know more about our products & services or would like to open an account, we would love to hear from you.

Useful email addresses

Looking to place an order? Send your PO's to orders@watercare.co.uk

To log a call out or for technical advice, email service@watercare.co.uk

Email your account queries to creditcontrol@watercare.co.uk

If you would like to open an account, email creditcontrol@watercare.co.uk

For all general enquires, email info@watercare.co.uk

To register a product, send your registrations to register@watercare.co.uk

Have a good story regarding our services or products? Email thankyou@watercare.co.uk



WE APPRECIATE YOUR BUSINESS THANK YOU!

Contact Information:



+44 1279 780 250



info@watercare.co.uk



www.watercare.co.uk



Regal House, South Road, Harlow CM20 2BL



Opening Hours Mon - Fri 0800 - 1700h



[@europeanwtrcare](https://twitter.com/europeanwtrcare)



[europeanwatercare](https://www.facebook.com/europeanwatercare)



[European WaterCare](https://www.linkedin.com/company/europeanwatercare)



BUY SMART. BUY BRITISH. BUY GREEN



EUROPEAN WATERCARE



www.watercare.co.uk

PROFESSIONAL WATER TREATMENT SOLUTIONS

**Head Office
United Kingdom**

Regal House
South Road
Harlow, Essex. CM20 2BL
Tel +44 1279 780250
www.watercare.co.uk

Orders: orders@watercare.co.uk
Service: service@watercare.co.uk
Enquiries: info@watercare.co.uk

**European WaterCare Ireland
Dublin, Ireland**

Dunboyne Business Park,
Dunboyne, Co. Meath
Rep of Ireland
Tel: 00353 (0) 1 801 3942
www.ewcireland.com

Orders: orders@ewcireland.com
Service: service@ewcireland.com
Enquiries: info@ewcireland.com

**Watercare Africa
Durban, South Africa**

49 Laguna Seca
Lee Barns Boulevard, Ballito
Kwazulu-Natal, South Africa 4420
Tel: +27 (0) 32 947 0063
www.watercareafrica.com

Orders: orders@watercareafrica.com
Sales: sales@watercareafrica.com
Enquiries: info@watercareafrica.com

**EWC Nordic
Copenhagen, Denmark**

Brostraedet 1
2640 Hedehusene
Copenhagen, Denmark
Tel: +45 60176642
www.ewcnordic.dk

Orders: orders@ewcnordic.dk
Service: service@ewcnordic.dk
Enquiries: info@ewcnordic.dk