

Professional warewashing technology

M-iClean U undercounter dishwashing machines

m
MEIKO
The clean solution



M-iClean U

That's the beauty of cleaning

Setting new standards in warewashing technology for food service



M-iClean – the new face of warewashing technology





The *M-iClean* has already debuted successfully at a range of premier venues and leading locales:

www.meiko.info/m-iclean-u



M-iClean – the new face of warewashing technology



"People come to our bar to relax, so don't want any hassle with the machines we use. With the M-iClean we know we're always on the safe side. It's great."

Feres Ladjimi, Executive Manager,
Mook Group, Frankfurt am Main



"It's hectic here in our hotel – but the M-iClean more than pulls its weight. The technology and performance are seriously impressive. This is no ordinary dishwashing machine, it is top of the class!"

Claudio Trübenbach, Chief Engineer,
Berlin Marriott Hotel, Berlin



"Here at Landhaus Scherrer, our focus is always on sustainable luxury. That means that our warewashing technology has to be clean in both senses of the word: hygienically and environmentally. The M-iClean does just that!"

Heinz O. Wehmann, Chef at Landhaus
Scherrer, Hamburg

Outstanding results in a visually striking package

You can see from the very first glance: the *M-iClean* is the start of a whole new chapter in technology and design. From its striking LED indicator handle to its silky matt stainless steel body and bright, clearly arranged interior, the *M-iClean* is quite clearly in a league of its own. Innovative technology and clean lines are the order of the day, right down to the very last details.

And the *M-iClean* also throws dishwashing into a colourful new dimension with an LED indicator handle that glows blue, green or red. This is how the machine clearly and visibly communicates its status: blue means "*ready for operation*", flashing green is "*washing efficiently*" and red indicates an "*important message*".

This revolutionary feature is designed to ensure maximum availability and efficiency. Beauty, simplicity and intelligence.

The indicator handle is the signature feature of the M-iClean

The *M-iClean* catches the eye immediately thanks to its striking LED indicator handle. The handle boasts an elegant design, smooth action and provides a useful indication of the machine's status. Always cool to the touch and remarkably satisfying to use, it gives the *M-iClean* a look that is entirely unique. Directly above the LED handle is the ergonomic touch display which acts as the *M-iClean*'s control panel. All the available functions appear as clearly identifiable icons, while the dynamic progress bar shows how much of the wash cycle has already been completed. Open the *M-iClean*'s door and you are in for a sparkling treat: the LED lighting gives a great view of the machine's interior as it glitters off the bright stainless steel surfaces. *M-iClean* – the brightly coloured face of a new generation of dishwashing machines.

M-iClean: say goodbye to dull routines!

Dishwashing just got a lot more colourful. As well as lifting people's moods and boosting motivation, the colour-coded *M-iClean* LED indicator also passes on important information to the machine operator.





M-iClean – blue stands for efficiency

The operating concept:
intuitive, ergonomic and logical



All MEIKO dishwashing machines are designed and built to provide maximum efficiency. That's what customers expect – and that's exactly what they get. But the *M-iClean* goes even further. Equipped with the full spectrum of innovative warewashing technology, the *M-iClean*'s intuitive operating concept ensures maximum efficiency and reliability.



M-iClean – blue stands for efficiency



If only everything else was this simple

Clarity is the number one priority. The *M-iClean* is tremendously reliable and easy to operate: working by colours. Any part of the machine that is coloured blue or illuminated in blue can be touched, operated or cleaned. This colour code prevents operator errors and accidental interruptions to the wash process.

The blue-lit touch display only ever shows the exact functions that can be performed at that specific moment in time. And the dynamic blue progress bar clearly indicates how much of the programme cycle has already been completed.

The blue components inside the machine, such as the practical *M-iClean filter*, are the components that can easily be checked or cleaned by the machine operator.



All blue components of the machine are designed for user interaction – the *M-iClean filter* is one example.

The *M-iClean*'s touch display provides all the key information at a glance. One-touch operation makes it easy for machine operators to navigate through the programme options.



M-iClean – blue stands for efficiency



Technology and beauty hand in hand

Two become one: the *M-iClean* uses a specially designed, stainless steel combined wash and rinse arm which harmoniously combines the machine's *wash* and *rinse* functions. The benefits:

- No risk of arms obstructing one another
- Durable, robust material
- Incredibly easy to clean

As well as being more efficient, the combined wash system is also more attractive and aesthetically appealing. That's *M-iClean*.



All-in-one: the combined *M-iClean* wash and rinse arm.

Easy to clean, zero hassle

The *M-iClean filter* is easy to remove and clean. For the ultimate in user-friendly cleaning, simply pull out the filter to remove any accumulated dirt. Of course the fact that it's blue clearly tells you, "I'm part of MEIKO's blue operating concept. You can take me out, clean me and pop me back in. Just like that!"

For extra peace of mind, the *M-iClean* automatically checks that you've put everything back in the right place.



Easy to pop out, simple to clean: the *M-iClean filter*.




A clean solution:
the practical *M-iClean filter*.



M-iClean – the green heart of dishwashing technology



Green stands for performance



All modern-day machines should have a green heart beating inside them – clean operation using minimal resources is the order of the day. Our engineers have taken this important lesson to heart in the truest sense of the word. The *M-iClean* uses considerably less water, energy and detergent and boasts a sustainable design based on durable materials. That means more stainless steel and less plastic.
The *M-iClean* – designed for green cleaning.



M-iClean – the green heart of dishwashing technology



Smart ways to save resources

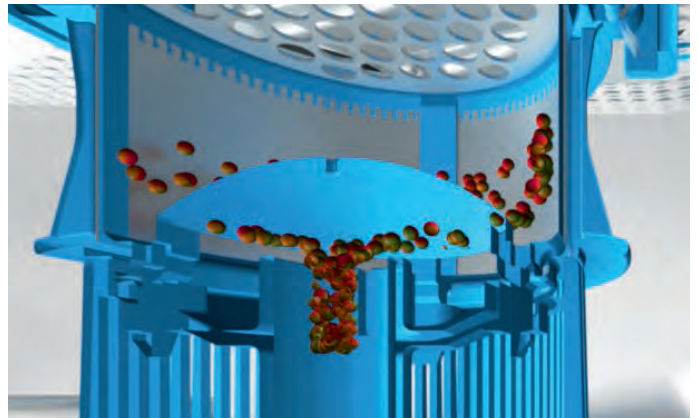
Life isn't just black and white, there are so many graduations in between – and that's the principle behind *M-iClean* technology, too. The *M-iClean* uses an intelligent energy management system to gradually shift its functions into standby mode when it's idle. This scale of standby levels means you use less electricity. By having a progressive series of power-saving modes instead of just one standby status, the *M-iClean* demonstrates the power of progress through smart engineering.

Making the best use of water and energy

The *M-iClean filter* effectively removes dirt thereby vastly reducing the necessary levels of detergent and clean water. The *M-iClean* wash programmes are designed with users in mind, offering the best balance of cleanliness and cost-effectiveness. For excellent warewashing results. That is green cleaning in action.



Maximum cleanliness down to the very last corner with an optimal use of resources.



Keeping things perfectly clear: the *M-iClean filter*.



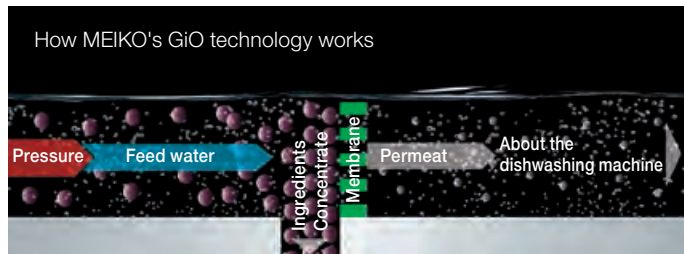
The *M-iClean* uses as much stainless steel as possible to ensure maximum reliability – the dosing pipes are just one example.



M-iClean – the green heart of dishwashing technology

Only GiO gets water really clean

MEIKO developed its GiO technology as a more efficient way of purifying water before the wash cycle. It works according to the principle of integrated reverse osmosis, a process that only allows pure water molecules to pass through the micro-fine filter membrane. That means only the purest of pure water is used for the rinse – another clean solution from MEIKO. The optional *GiO MODULE* for the *M-iClean* can be placed beneath, at the rear or simply to one side of the machine. This saves space and ensures your solution meets your particular needs. The results are striking: brilliantly clean washware, a compact footprint, fewer breakages – and, of course, the reassurance of perfectly hygienic washware.



Optimum dishwashing quality and efficiency

Our many years of experience have shown us that the best results in terms of both cleanliness and costs are achieved using the latest reverse osmosis technology:

- Superb cleaning results
- No limescale deposits on the washware
- No risk of machine breakdowns and defects due to limescale deposits
- Lower consumption of detergent and rinse aid
- More eco-friendly thanks to reduced load on sewage system
- More cost effective thanks to the elimination of manual polishing of glassware and cutlery, plus significantly fewer breakages of glassware
- Compact dimensions
- All connections included
- Fully integrated into the dishwashing machine's control system

Never polish glassware again!



The *GiO MODULE* is fitted so as to best suit our customer – under the machine, behind it or to the side.

Not just hot air – our innovative heat recovery system

Energy and water are the key ingredients to achieve sparkling results. Intelligent MEIKO technology recovers valuable heat using the *M-iClean AirConcept* system. Instead of being released into the room, the hot vapour is fed back into the machine as part of the heat recovery process. This significantly improves the indoor climate in the washing-up area

and makes the task of emptying the machine far more pleasant. The hot steam is fed across a heat exchanger, the heat is recovered and re-used in the next heating process. This achieves significant energy and cost savings – and it even gets the washware dry quicker.



Recovering energy from hot air – the *M-iClean's AirConcept* system.

15%

The optional *M-iClean AirConcept* system can save up to 15% on valuable energy – that really adds up!





M-iClean – everything is under control.



If the LED handle on the *M-iClean* is illuminated in red, that means something unexpected has occurred in the wash cycle. That could have a number of different causes – so the touch display gives you the exact information you need to identify the problem. With its intelligent sensor technology, automatic monitoring of the filter and programme status, and crystal-clear servicing instructions, the *M-iClean* stays on top of every situation so you can feel reassured that everything is under control.

Vigilant monitoring
and easy maintenance



M-iClean – everything is under control

Intelligent function monitoring

The *M-iClean* uses the indicator colour *red* to pass on important messages and information about servicing and maintenance. The *M-iClean* is specifically designed to be easy to maintain, so faults or malfunctions can generally be remedied by the operator. For example, the drain pump is easily accessible from inside the machine, making it simple to remove any foreign objects. The leakage detection system reliably detects any leaks that may occur, and the wash arm and filter monitoring system displays clear information to the user on the touch display in the event of any problems in this area. Nobody is perfect, but the *M-iClean* knows how to cope when things don't go to plan.

The intelligent choice



The wash system and filter are the two key components of the *M-iClean*. Intelligent monitoring by sensors ensures that a close eye is kept on every aspect of the machine's operation. Have all parts been slotted back into place properly? Is the wash arm rotating properly? The *M-iClean* has all the answers.



Pump OK

You can access the *M-iClean*'s drain pump from inside the machine. That makes it easy to remove anything that shouldn't be there so the wash cycle can continue as quickly as possible.



It's all in the pipeline

The decision to use stainless steel for all the supply lines minimises wear, making the *M-iClean* more robust and durable.



Simple data exchange

The *M-iClean*'s Bluetooth interface makes it easy to transmit service data. This ensures maximum availability, letting the *M-iClean* focus on the dishwashing work it was built for. You can't get more sustainable than that.

We've got you covered

MEIKO's comprehensive and professional service means there is nothing to worry about. Our extensive service network means that rapid assistance is never far away, whether you need spare parts delivered or a new part fitted.



M-iClean – beauty in numbers



MONKEY 47, Stuttgart – all in good taste

Sparkling glassware – no
polishing necessary

Perfectly clean dishware

Café convenience: everything
in one rack – and all perfectly
clean

All-round versatility –
perfect for bulky washware



Unbeatable versatility

The *M-iClean* offers a full range of innovative warewashing technology, including intuitive operation, efficient washing with minimal use of resources (*Green Cleaning*) and reliable status checks including smart monitoring technology. But that's not all. The *M-iClean* is also unbeatably versatile and flexible, offering the optimum warewashing experience for every situation. From the hotel, catering and food service trades to butchers and bakeries, the *M-iClean* stands out in just about any setting, producing truly outstanding results.

Baker's delight – also accommodates large trays



The right choice for butchers



Sparkling clean cutlery

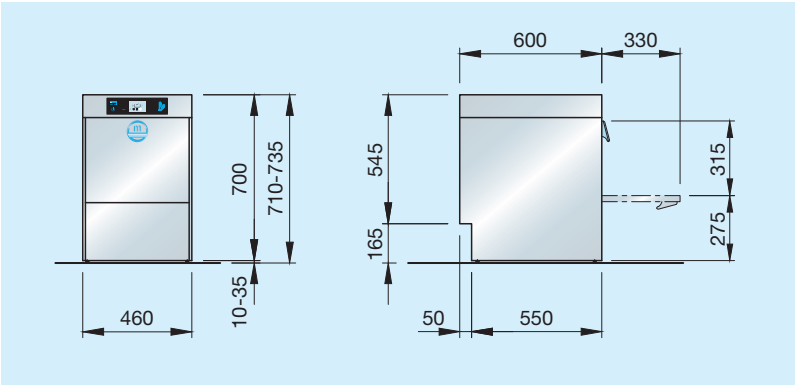


Your *M-iClean* is ready and waiting!

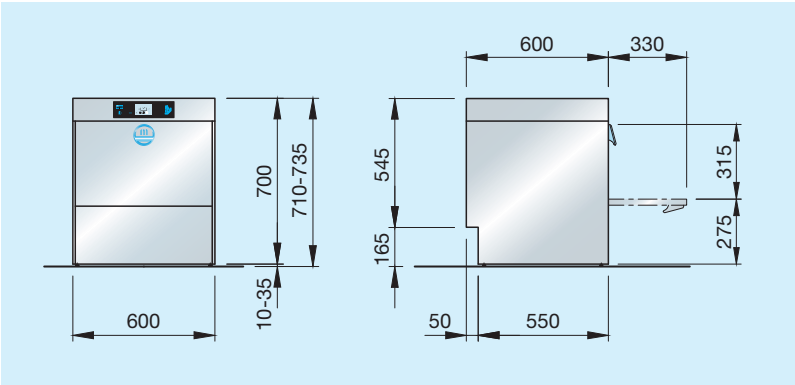


M-iClean – beauty in numbers

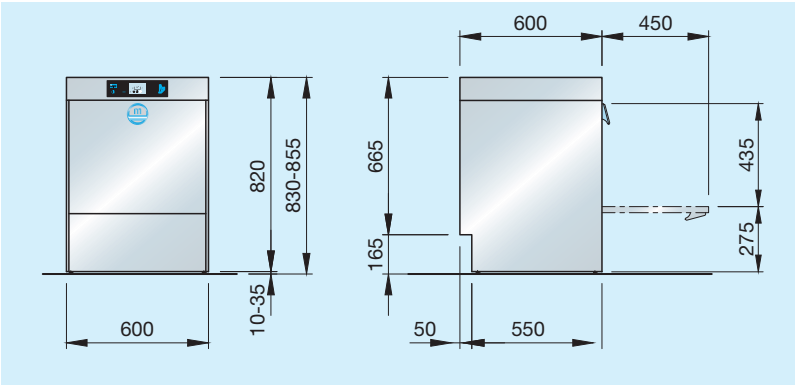
M-iClean US



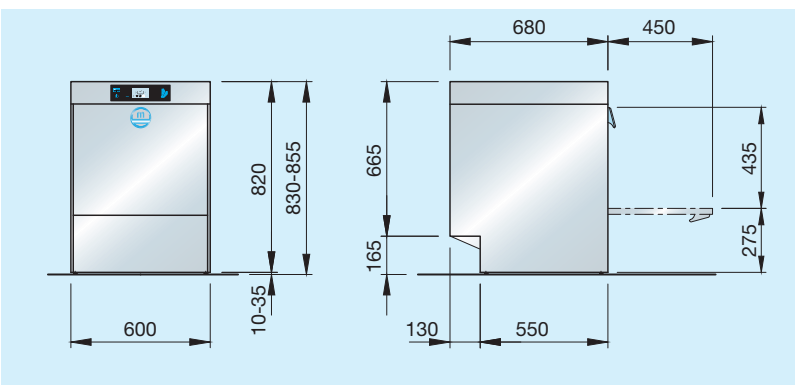
M-iClean UM



M-iClean UM+



M-iClean UL



M-iClean electrical and water installation

Electrical installation:

Electrical connection: three phase 3NPE 400 V, 50 Hz – can be converted to single phase 1NPE, 230 V, 50 Hz on site.
Fuse protection: 16 A.

Water installation:

The machines can be connected directly to the fresh water connection without the use of intermediate safety valves. Min. flow pressure 0.6 bar, max. pressure 5 bar. The fresh water connection must be installed in accordance with the regulations applicable in your region (e.g. Germany DIN 1988/EN 1717). Drain hose DN 22. Max. height of customer's drain outlet on wall 700 mm. Connecting cables reach approx. 1.6 m from machine.

GiO MODULE (all models):

Cold water connection (max. 35 °C), min. flow pressure 1 bar, max. pressure 5 bar.

Conductivity of raw water <1000 µS/cm. Total water hardness max. 28°dH.

Connection kit:

1 m reinforced hose, stop valve, pressure regulator, 10 µm filter with activated carbon, 2 m reinforced hose to machine.

Drain kit:

concentrate drain hose approx. 2 m, drain piping incl. backflow preventer. Type 'AA' air gap according to EN 1717.

Permeat and electrical lines between machine and separate GiO MODULE approx. 3 m.

When using the GiO MODULE a backflow preventer must be used in accordance with EN 1717 to ensure DIN-compliant operation (optional).

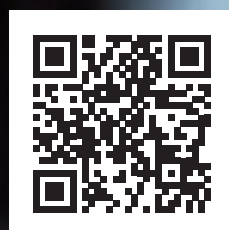
(1 bar = 100 kPa) (1 °dH approx. 0.18 mmol/l CaCO₃)

Technical data	US glasswasher		UM glasswasher		UM dishwashing machine		UL universal warewashing machine	
	400 V	230 V	400 V	230 V	400 V	230 V	400 V	230 V
Fuse protection	16 A		16 A		16 A		16 A	
Tank heating kW	2.0		2.0		2.0		2.0	
Boiler heating kW	6.0	2.0	6.0	2.0	6.0	2.0	6.0	2.0
Pump output kW	0.5		0.5		0.5		0.5	
Total connected load kW	6.7	2.7	6.7	2.7	6.7	2.7	6.7	2.7
Water consumption l/Rack	1.9		2.4		2.4		2.8	
Tank capacity l	7.5		11.0		11.0		11.0	
Entry height mm	315		315		435		435	
Rack dimensions mm	400 x 400		500 x 500		500 x 500		500 x 600 (500)	
Cycle time s	90/120/180		90/120/180		90/120/240		90/120/240	
Theoretical rack capacity racks/h	40/30/20		40/30/20		40/30/15		40/30/15	
Cycle time (cold water) s	90/120/180	180/180/240	90/120/180	180/180/240	90/120/240	180/180/240	90/120/240	180/180/240
Theoretical rack capacity racks/h	40/30/20	20/20/15	40/30/20	20/20/15	40/30/15	20/20/15	40/30/15	20/20/15

If the machine is connected to a cold water supply and/or if racks are inserted in quick succession, the duration of the wash cycles may be increased to achieve hygienic final rinse temperatures.

The water change programme increases the duration of the cycle time.

www.meiko.info/m-iclean-u







The clean solution



Meets the hygiene requirements of DIN SPEC 10534.



130.021.01.03.18/EN/FD/2500

We reserve the right to amend specifications
as part of our product improvement process.